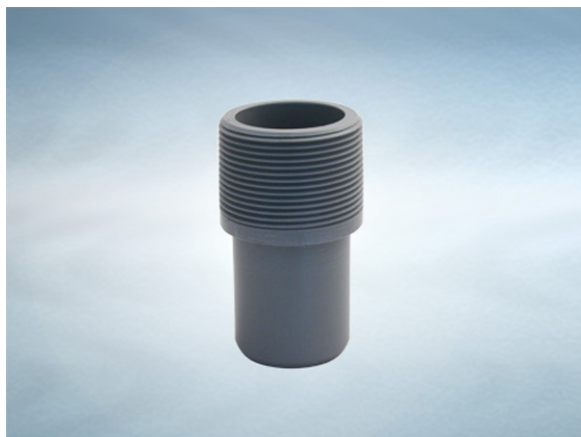


Product Details

T1802 Adaptor

Technical Data

**Dimensions:**

50 dia. overall size

90 - Length

Connection - 50mm stainless steel / Harmer SML

Materials - ABS

Weight - 0.2 kg

General Description:

ABS T series Threaded Pipework Adaptor, with 2" BSP inlet and 50 dia. outlet. Connects to stainless steel europipe (BS EN 1124)

Materials:

ABS: Used for bodies, dip tubes, extensions and spigot adaptors. A cost effective, fire resistant material.

All dimensions are in millimetres unless stated. In line with general practice all dimensions shown are nominal.

Wade International

Third Avenue, Halstead, Essex, CO9 2SX.

Telephone: +44 (0)1787 475151

Fax: +44 (0)1787 475579

e-mail: wadetech@alumascwms.co.uk

website: <https://www.alumascwms.co.uk/brands/wade/>

Dimensioned Section for T1802:

